

TECHNICAL DATASHEET

SETU VTEP

ADVANCED NETWORK
BRIDGING SOLUTION
THAT BRIDGES
BUSINESSES TO
SUCCESS



MATRIX SETU VTEP

The future of business connectivity is here and ready to be delivered at your doorstep under Media Gateway. This advanced network-the name of SETU VTEP 4P/3P/2P/1P - Matrix bridging solution offers interfaces for multiple VoIP and ISDN PRI T1/E1 ports. It can be used with any existing PBX without changing their existing telephony infrastructure or in a standalone mode too. Matrix SETU VTEP works as an adjunct and supports flexible routing options, providing significant cost saving and round-the-clock connectivity.

MATRIX SETU VTEP 4P/3P/2P/1P

Wanting to break the myth that expanding and upgrading a business enterprise can overburden it with heavy expenditures, we introduce the high-class corporate sphere to SETU VTEP - a magnificent range of Next Generation Multiport VoIP-PRI Gateway.

Designed to integrate with existing PABX telephone systems, this provides a smooth transition by enabling direct routing of calls between the fixed-line ISDN. Thus, businesses opting for cost-effective IP that capitalizes on low-cost VoIP telephony.

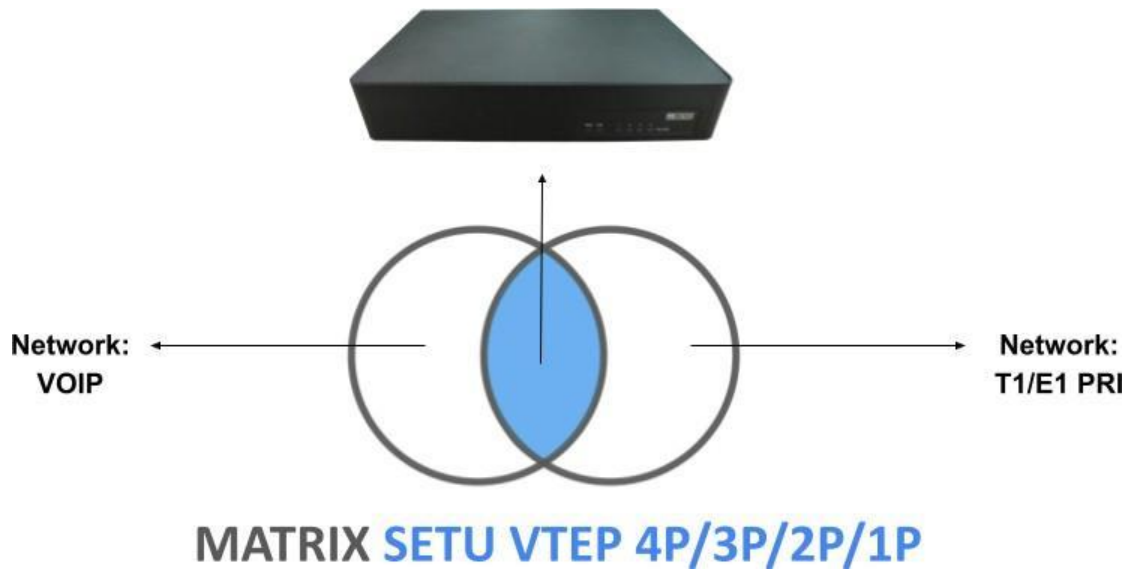
TECHNICAL SPECIFICATIONS

PRODUCT VARIANTS				
PARTICULARS	T1/E1 PRI Ports	SIP Trunks	No. of simultaneous calls (VoIP to PRI)	No. of Built-in VoIP Modules
SETU VTEP 4P	4	125	120	2
SETU VTEP 3P	3	125	90	2
SETU VTEP 2P	2	125	60	1
SETU VTEP 1P	1	125	30	1

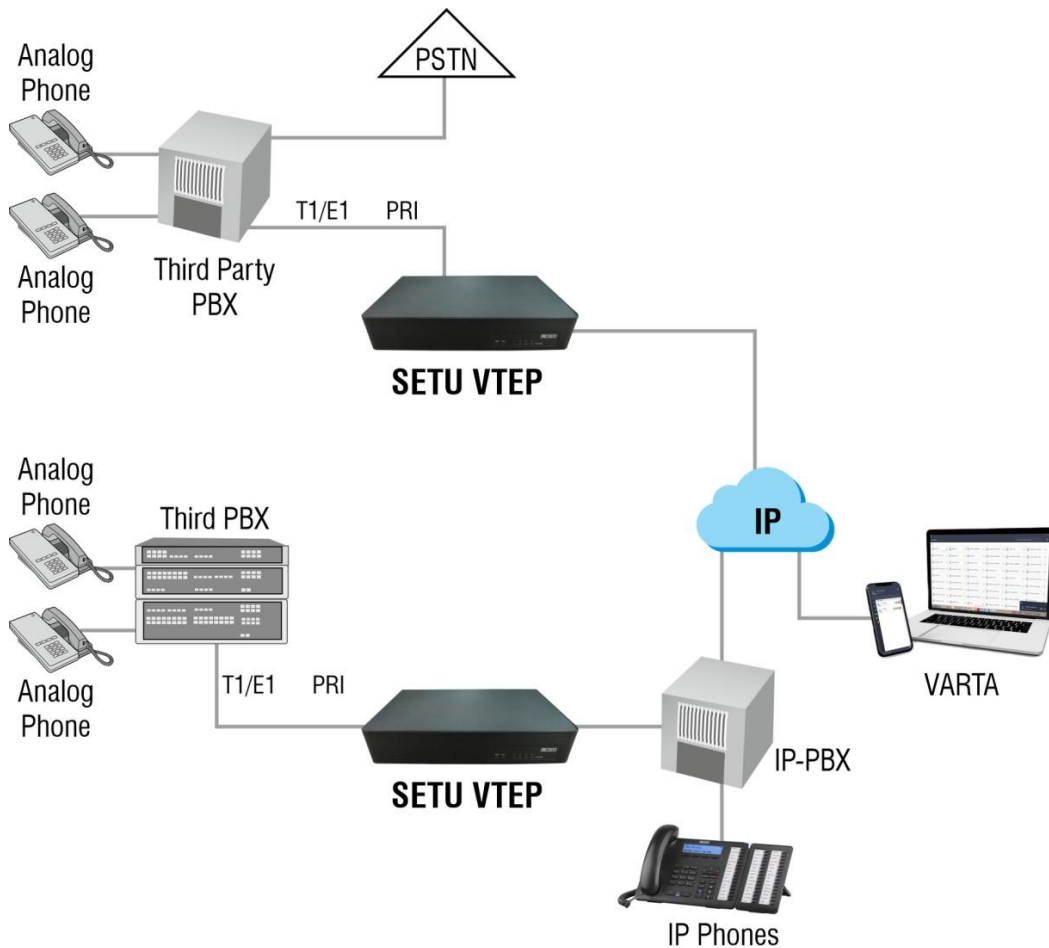
LAN Port	1 X 10/100/1000 Mbps Gigabit Interface
WAN Port	1 X 10/100/1000 Mbps Gigabit Interface
VoIP Protocols	SIP V2, SDP, RTP (RFC 2883)
Network Protocols	IPV4, TCP, UDP, DHCP, SNTP, STUN, HTTP

NAT	STUN and NAT Keep-Alive
Voice Codecs	G.723, G.729, iLBC 30ms & 20ms, GSM-FR, G.711 A-Law & μ -Law, GSM-EFR
Call Progress Tone	Dial Tone, Ring Back Tone, Busy Tone, and Error Tone
FAX	T.38 UDPTL and Pass-Through
Power Supply	12V DC, 2A
Power Consumption	22.37 Watt (Max.)
Dimensions (W X H X D)	250.6 X 155.7 X 46 MM (Without Side Clamp) 491 X 155.7 X 46 MM (With Side Clamp)
Mounting	1U Rack Mount & Table-Top
Operating Temperature	0°C to 45°C
Operating Humidity	5-95 RH, Non-Condensing
Storage Temperature	-20°C to +70°C
Storage Humidity	0-95% RH, Non-Condensing

MATRIX SETU VTEP APPLICATION



MATRIX SETU VTEP DEPLOYMENT ARCHITECTURE



About Matrix

Established in 1991, Matrix is a leader in Telecom and Security solutions for modern businesses and enterprises. Matrix, an innovative, technology driven and customer focused organization, is committed to keep pace with the revolutions in the telecom and security industries. With more than 40% of its human resources dedicated to the development of new products, Matrix has launched cutting-edge products like IP-PBX, Universal Gateways, VoIP Gateways and Terminals, GSM Gateways, Access Control, Time-Attendance and Video Surveillance solutions. These solutions are feature-rich, reliable and conform to the international standards. Having global footprints in Asia, Europe, North America, South America, and Africa through an extensive network of more than 2,500 channel partners, Matrix ensures that the products serve the needs of its customers faster and longer. Matrix has gained trust and admiration of customers representing the entire spectrum of industries. Matrix has won many international awards for its innovative products.



MATRIX COMSEC

Head Office

394-GIDC, Makarpura, Vadodara-390 010,
India.

Ph: (+91) 265-613-7222

E-mail: Inquiry@MatrixComSec.com

Factory

19-GIDC, Waghodia,
Dist. Vadodara-391 760,
India.

Ph: (+91) 265-613-7222

MATRIX COMSEC - North America

2 Wickstead Crt, Brampton,
Ontario, L6R 1N8

+1 408-643-0581 (USA)

+1 437-266-1005 (Canada)